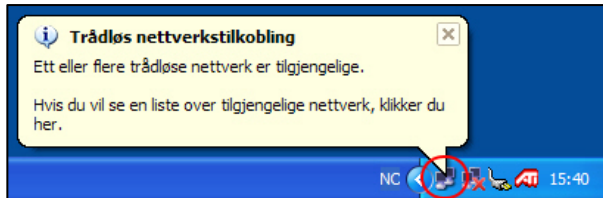


How to connect to a wireless network with a built-in wireless card

This manual describes how you connect to a wireless network with your built-in wireless card. This user manual is customized for Windows XP with ServicePack1, there is a separate user manual for Windows XP with ServicePack2. If your wireless card/adapter use its own wireless utility instead of the Windows utility, you must check the user manual for your wireless card/adapter to see how you connect to a wireless network.

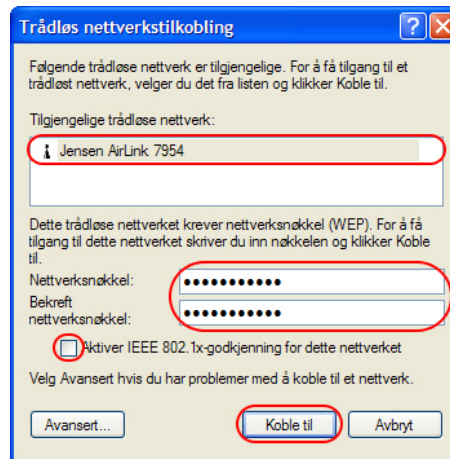
You will find an icon similar to this on your taskbar (in the red circle) :



- Click on the messagebox "**wireless network connection**" or double-click on the icon in the red circle. You should see a window like in the pictures below (the pictures show both encrypted and non-encrypted networks) :



(picture 2.1 – non-encrypted network)



(picture 2.2 - encrypted network)

- Click on your network in the white box, the name of the network is the SSID value in your wireless router (i.e. Jensen AirLink 7954). If you don't remember the name of your network, check the user manual for your wireless router.

You will get an option below the white box depending on if your wireless network is encrypted or not.

- If the router is not encrypted you select the option "**Allow me to connect to the chosen wireless network**" and click "**Connect**" to connect to the wireless network.
- If the router is encrypted you need to enter the encryption key in the field "**Encryption key**" and verify this key in the field "**Confirm encryption key**". If the option "**Enable IEEE 802.11x-authentication**" is enabled you should remove this selection. Click "**Connect**" to connect to the wireless network.

You will see a messagebox like the one on the picture below to verify that you are connected to your wireless network. Check to see that the signal strength is solid and stable to confirm your connection is ok.

